

2024 COMMUNITY & ECONOMIC IMPACT REPORT



**Fibre
Federal**
CREDIT UNION

TLC
A DIVISION OF **FibreFederal**
CREDIT UNION

Fibre Family

As a member-owned, not-for-profit cooperative, we exist to meet our members' financial needs with quality loans, savings products, and tools to achieve financial wellness. Our members are part of our "Fibre Family," and they save over \$24 million annually because they choose to trust us as their financial partner.

We're committed to the betterment of the communities we serve. We believe that by doing good—#CreditUnionGood—throughout our membership areas, we can help shape a more positive future for our communities and our members.

#CreditUnionGood

Our Volunteer and **#CreditUnionGood** Efforts Are Grounded by Our Giving Pillars:

- **Youth:**

Providing educational enrichment and individual development opportunities for youth in our communities.

- **Education:**

Connecting individuals of all ages to educational courses, materials, and experiences that will help them achieve their full potential.

- **Health & Well-being:**

Providing essential community resources like food, shelter, and healthcare to individuals and families.



ECONOMIC IMPACT

At Fibre Federal Credit Union and TLC, we positively impact our local economy through our operations, employees, and member-focused structure, as demonstrated by recently released data from 2023.*

116,884+

members served

\$15.2 Million

in direct member benefits

320

employees with family wage jobs

\$95.9 Million

Total value added to the Gross Domestic Product (GDP)

720

total jobs supported via credit union operations

*GoWest 2023



FINANCIAL EDUCATION

From learning to count coins to smart credit management, we make financial education a priority by offering free financial literacy classes and tools to children, teens, and adults in our service areas.

3,754

people reached through financial education efforts

2,537

hours of financial education provided to children and adults

17

in-person financial education presentations



GREENPATH

We partner with [GreenPath Financial Wellness](#) to provide our members with guidance and tools to meet financial goals and improve overall financial health. Services cover debt management, credit counseling, student loans, housing resources, and more.

\$495,835

total debt paid off



\$1,528,745

total debt enrolled

154

member clients

72

members started Debt Management Plans

VOLUNTEERISM

We encourage our **Fibre Family** employees to get involved with community events and projects throughout the year. Volunteering is a great way to showcase our “people helping people” spirit outside our financial services centers. And bettering the individuals, families, and communities we serve is part of the credit union difference!

1,856

hours

236

volunteers

957

volunteer shifts

79

organizations

90

community events we ran or helped host with partner organizations



DONATIONS & SPONSORSHIPS

We're consistently developing and strengthening our [local partnerships](#) to create stronger, healthier places to live, work, and play.

\$480,620

donated

284

donations

165

organizations supported

\$29,975

in staff payroll deduction donations to non-profits



OTHER HIGHLIGHTS

Credit Unions for Kids & Doernbecher Days:

Oversaw **\$62,183** in donations for Doernbecher Children's Hospital through credit union, employee, and member donations. Total since 2010: **\$614,597**.



Cash Club Cares Program:

We donate \$5 to animal shelters for each new youth account opened, up to **\$5,000** annual pledge. Total since 2017: **\$33,321**.



Communities First Program:

Continued our pledge to disburse **\$46,500** annually to seven community colleges and thirteen hospitals across our service areas. Total since 2018: **\$238,000**.



Grant Funds:

\$240,000 in grants to 15 community partners through Visa partnership and Member Impact Fund from Federal Home Loan Bank (FHLB) of Des Moines.



Christmas Tags:

Partnered with foster care agencies in five counties to help provide gifts for children and teens. We raised **\$3,951** to purchase gifts and filled **210** tags for every foster child in Cowlitz and Wahkiakum counties.



Special Olympics:

Coordinated a give-back event at our all-staff training day to assemble **350** goodie bags, each including a handmade inspirational card, for local Washington and Oregon Special Olympics athletes.



Department Donations:

\$16,688 in donations from our departments to community organizations.

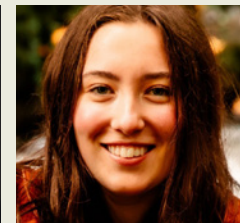


Member Scholarships:

Awarded seven scholarships totaling

\$11,000.

Total since 1995: **\$247,500.**



Advocacy:

\$7,904 for America's Credit Unions PAC, which provides bipartisan financial support to candidates and legislation that support credit union goals.





PO Box 1234
822 Commerce Avenue
Longview, WA 98632

fibrecu.com | 800.205.7872



Social Media

